



# District® The Concert Tank®. DT5300



A tank that rocks w ith style.

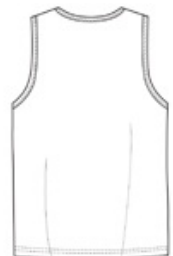
- 4.3-ounce, 100% soft spun cotton, 30 singles
- 50/50 soft spun cotton/poly (Neons, Heathered Navy, Heathered Royal)
- 90/10 soft spun cotton/poly (Heather Grey)
- 98/2 soft spun cotton/poly (White Heather)
- Tear-aw ay label
- Slightly slimmer body
- Self-binding at neck and armholes

### CARE INSTRUCTIONS

Machine w ash cold w ith like colors, non-chlorine bleach w hen needed. Do not use fabric softener. Tumble dry low.



front



back

### HOW TO MEASURE



#### CHEST WIDTH

Measure under the arm and around the fullest part of the chest w ith arms dow n, keeping tape horizontal.

### SIZE CHART

	XS	S	M	L	XL	2XL	3XL	4XL
Chest	32-34	35-36	37-39	40-42	43-45	46-48	49-51	52-54

### COLOR INFORMATION

Black PMS BLACK C	Charcoal PMS 7540C	Deep Royal PMS 7687 C	Heather Grey	Heathered Navy PMS 2379C	Heathered Royal PMS 660C	Neon Orange PMS 811 C	Neon Pink PMS 190C	Neon Yellow	New Navy PMS 533C	New Red PMS 3517C
White	White Heather									